



TS-9503 OVERVIEW

Multi-Band Flat-Panel Antenna

Maximal Coverage, Minimal Footprint

This vertically polarized flat-panel antenna provides exceptional performance with its unique design.

Only about 2 ft square and about 1 in deep, this genetically engineered sensor fits where no other antenna can, thanks to its super-slim and unobtrusive form factor. Wideband and omnidirectional, this high-performance passive antenna was designed to be placed flat against a wall to minimize its footprint while maximizing transmission or detection.

The RF connectors are accessible both from the top and rear center of the housing, with provisions to hide the connectors for through-wall cable feeds. The three precision SMA outputs ensure maximum signal response across all bands and provide physical preselection between the elements.

The visually pleasing antenna is easy to install and provides coverage across an ultra-wide frequency range.



Genetically engineered with the latest in CAD technology and slim enough for concealed, unobtrusive mounting

Specifications

Frequency coverage 20 MHz–18 GHz overall coverage

- ◊ Low band: 20–400 MHz
- ◊ Mid band: 400 MHz–2.5 GHz
- ◊ High band: 2.5–18 GHz

Antenna gain (passive) VHF/UHF band:

- ◊ –48 dBi min @ 20 MHz
- ◊ –15 dBi min @ 100 MHz
- ◊ –3 dBi min @ 200 MHz–2.5 GHz

SHF band:

- ◊ –3 dBi min @ 2.5–18 GHz
- ◊ –30 dBi min @ 1 GHz

Polarization Vertical linear

Pattern Omnidirectional in azimuth

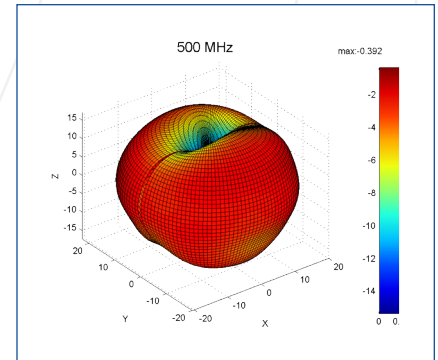
RF output 3 SMA connectors

Panel size 24.6 × 22.5 × 1.2 in

Environmental –40 to +85 °C



▲ Size comparison between the TS-9503 and the TS-9504 Dual-Band Flat-Panel Antenna.



▲ Antenna response graph.



CONTACT US TODAY

To schedule a demonstration, or for more information, including pricing and availability on this or any of our products, call, e-mail or visit us online.

